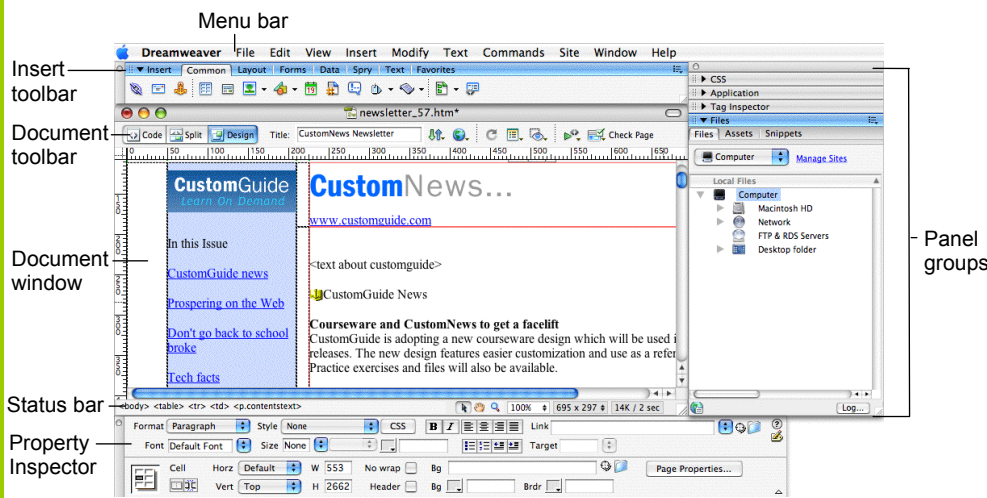


### Dreamweaver CS3 Workspace in OS X



### Keyboard Shortcuts

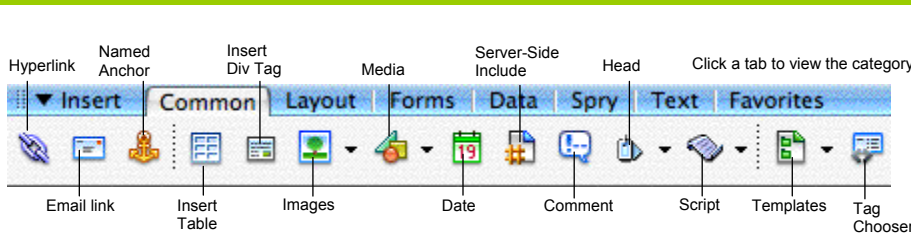
#### General

Insert Named Anchor	<⌘> + <Option> + <A>
Add to Library	<⌘> + <Shift> + <B>
Select All	<⌘> + <A>
Preferences	<⌘> + <U>
Replace	<⌘> + <H>
Show/Hide Grids	<⌘> + <Option> + <G>
Visual Aids	<⌘> + <Shift> + <I>
Insert Image	<⌘> + <Option> + <I>
Page Properties	<⌘> + <J>
Create Link	<⌘> + <L>
Remove Link	<⌘> + <Shift> + <L>
Insert Table Row	<⌘> + <M>
Delete Table Row	<⌘> + <Shift> + <M>
Quick Tag Editor	<⌘> + <T>
View Head Content	<⌘> + <Shift> + <W>
Show/Hide Link	<⌘> + <Shift> + <Y>
Switch Views	<⌘> + < ` >

### Document Toolbar

- Code View:** View or edit the page in HTML.
- Split View:** View the page in HTML code and Design view (WYSIWYG) at the same time.
- Design View:** View or edit the page in the WYSIWYG (What You See Is What You Get) editor.
- Title:**  **Title:** Type the Web page title without using the Page Properties dialog box. The title appears in the title bar of the browser.
- File Management:** Access already-published files, or upload files directly from the document window.
- Preview:** Choose from a list of browsers installed on the computer to preview the page.
- Refresh:** Click to update changes made to the page while working on the HTML code.
- View Options:** In Design view, turn visual aids off or on such as table borders, or apply a grid or ruler to the page. In Code view or the Code Inspector, change how the HTML code is displayed.
- Visual Aids:** Choose from different aids to help you design your pages.
- Validate markup:** Validate current document or tag.
- Check Browser Compatibility:** Check the compatibility of your document with different Web browsers.

### Insert Panel



- Common:** includes objects commonly inserted in a Web page (ex. tables, images, layers)
- Layout:** insert or draw layout tables and cells on the page
- Forms:** insert elements often found in a Web form (i.e. text fields, option buttons, check boxes)
- Data:** insert Spry data objects and other dynamic items like update forms
- Spry:** includes Spry objects and widgets for making Spry pages
- Text:** apply formatting to text (ex. bold, italic, list item)
- Favorites:** allows you to group the buttons you use most often

#### Function Key Shortcuts

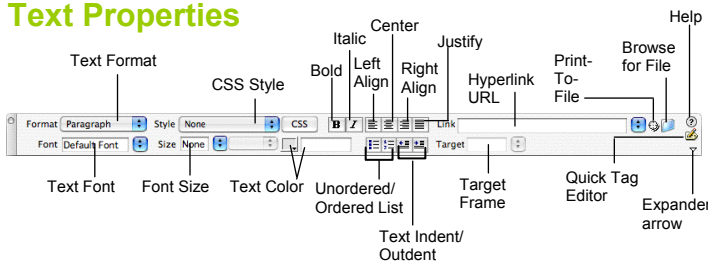
Reference	<Shift> + <F1>
Layers	<F2>
Insert bar	<⌘> + <F2>
Frames	<Shift> + <F2>
Property Inspector	<⌘> + <F3>
Behaviors Panel	<Shift> + <F3>
Hide/Show Panels	<F4>
Refresh	<F5>
Refresh Local	<Shift> + <F5>
Switch to Layout View	<⌘> + <F6>
Switch to Standard View	<⌘> + <Shift> + <F6>
Site Files	<F8>
Check site links	<⌘> + <F8>
Code Inspector	<F10>
History Panel	<Shift> + <F10>
Assets Panel	<F11>
CSS Styles Panel	<Shift> + <F11>
Preview in Primary Browser	<F12>
Preview in Secondary Browser	<Shift> + <F12>

# Property Inspector

## General Commands

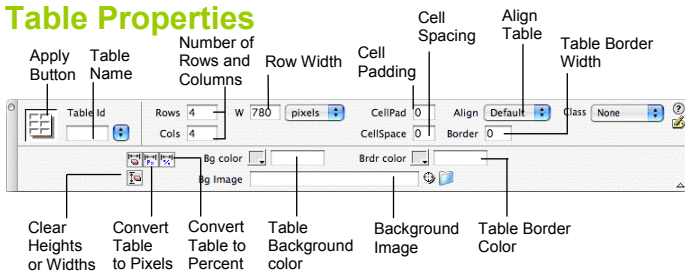
- Select an item to view its properties.
- **To Get Help:** Click the **Help button** for more information on options.
- **Format Text in HTML Code:** Click the **Quick Tag Editor button** to apply an HTML tag to selected text or object.
- **To Expand/Contract the Property Inspector:** Click the **Expander arrow** in the lower right corner to view or hide all the options in the Property Inspector.

## Text Properties



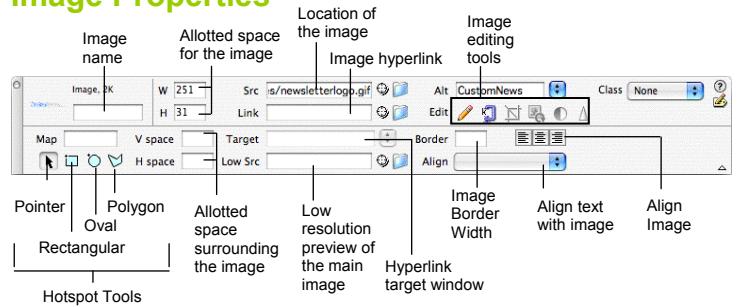
- **To Format Text:** Select the text and apply formatting from the Property Inspector.
- **To Create a Hyperlink:** Select the text and type the URL in the Link textbox; or click the **Folder icon** to browse for a file in the Web site.
- **Specify Link Target Frame:** Specify in which frame the hyperlink should appear.

## Table Properties



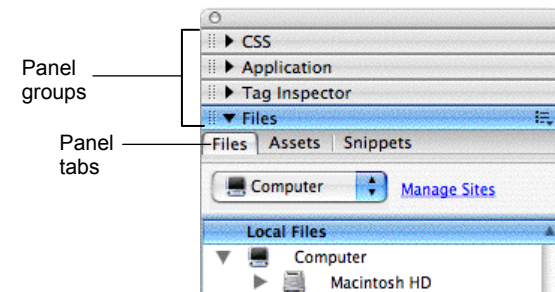
- **To View Table Formatting:** Click the **Apply button** in the Inspector.
- **To Add or Delete Rows or Columns:** Type the number of rows or columns you want to add or delete in the Rows and Cols text boxes.
- **To Change Table Width:** Type a number in the W box.
- **To Display the Table in Pixels or Percent:** Click the **pixels or percent button arrow** and select the display option.
- **To Add Cell Padding or Cell Spacing:** Enter the amount in the CellPad or CellSpace text boxes.
- **To Add a Table Border:** Enter the amount in the Border text box.
- **To Add a Background Color:** Click the **Bg Color list arrow** and select a color from the palette.
- **To Add a Border Color:** Click the **Brdr Color list arrow** and select a color from the palette.
- **To Add a Background Image:** Type the location in the Bg text box, or drag the **Point-to-File icon** to the file in the Site window; or click the **Folder icon** to browse for a file.
- **To Add a Table Border:** Enter the width in the Border text box.

# Image Properties



- **To Add a Hyperlink to an Image:** Select the text and type the URL in the Link textbox; or drag the **Point-to-File icon** to the file in the Site window; or click the **Folder icon** to browse for a file in the Web site.
- **To Create an Image Map:** Select the **Rectangular, Oval, or Polygon Hotspot Tool**, draw a shape and set the link location.
- **To Edit an Image:** Click the **Edit button** to launch the default graphic editor program on your computer.
- **To Align an Image:** Click the **Align list arrow** and align the image relative to text nearby; or click the **Left, Center or Right Align button** in the Inspector.
- **To Insert an Image:** Press **<#> + <Alt> + <I>**, or select **Insert → Image** from the menu.

# Panels



- **To View or Hide a Panel:** Select **Window** from the menu bar and select the panel you want to view or hide. Or, click the panel group and select the panel tab you want to view.
- **To View or Hide Panel Groups:** Click the **Panel group Expander arrow** between the document window and the panel groups.
- There are four panel groups available in Dreamweaver:

## CSS

**CSS Styles:** Apply CSS styles to the current selection

**AP Elements:** Manage the AP (absolutely positioned) elements in your document

## Application

**Databases:** Create and inspect database connections, insert database code

**Bindings:** Locate and insert dynamic content

**Server Behaviors:** Create, insert and edit server behaviors into the page

**Components:** Create, inspect, and insert components or component code

## Tag Inspector

**Attributes:** Edit or add attributes and their values

**Behaviors:** Attach or modify behaviors to page elements such as tags

## Files

**File:** Track local and remote files, and upload files on the Web

**Assets:** View and insert site assets such as images, HTML colors, links, Flash movies, scripts, templates, and library items

**Snippets:** Create, delete, edit, or insert code snippets in the document